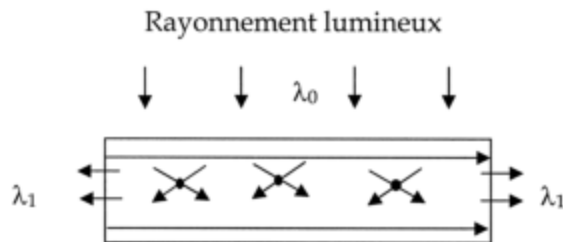


FLUORESCENT OPTICAL FIBRES

Adapted for decoration, advertising, aiming (sights), control and wavelength converters

These fibres are absorbing the light laterally and generate a luminous point at their extremities. An incident transversal light is absorbed by the fiber. A light having a higher wavelength is emitted at the extremities.



OPTICAL CHARACTERISTICS :

Refraction index of the core :	1.592
Refraction index of the cladding :	1.416
Numerical aperture :	0.73
Acceptance angle :	93°

Optical fiber type	F205	F200	F201	F203	F204	F202
Absorption spectra (nm)	294-410	315-410	299-477	388-511	441-545	493-580
Emission spectra (nm)	406-453	407-455	471-511	484-537	533-581	567-655
Maximum at (nm)	424	427	493	520	542	625
Color	Violet	Blue	Green	Yellow	Orange	Red

PHYSICAL CHARACTERISTICS:

Available diameters :	0.25 – 0.50 – 0.75 – 1 – 1.50 – 2
Maximum temperature of use :	70 °C
Maximum charge before breaking (Kg/mm ²) :	5
Acceptable curve radius for a fiber of Diam 1mm :	25mm
(We can obtain lower radii through thermoforming)	

PACKAGING :

Fibers can be delivered in bobbins, or cut and polished

Contact : Apollinaire Technologie – Zone Industrielle – 76440 Forges les eaux – France
 Tel : +33 (0)6 83 18 17 20 Fax : +33 (0)9 72 26 19 91 – lk@aengineers.com
www.aengineers.com